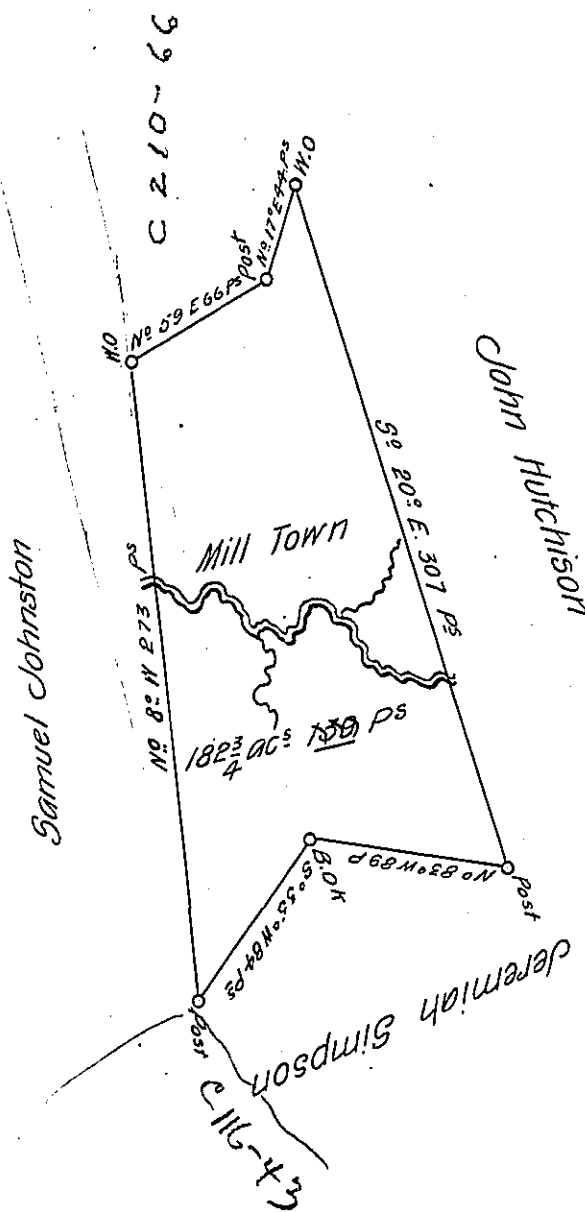


C-89-255



A draught of a Survey call'd Mill Town situate on Racoon Cr. in Washing-
 ton County contg. $182\frac{3}{4}$ acs 139 PS Strict Measure, executed July 12th 1785 in Consequence
 of a Certif- for 300 acs granted to Sam^l Johnston by the Commiss^{rs} appointed
 by Virg^a to adjust the Claims to Unpatented lands in the Counties Monong^a
 Yong^a & Ohio and duly entered with the County Surveyor as appears from the
 list of Entries transmitted from the Surr^r Gen^l Office - Entd 25th Feb^y 1780
 Retd 3^d Octo^r 1786.

Presley Nevill }
 Matt^w Ritchie } D.S^s

dn^o Lukens Esq^r S. Gen^l

IN TESTIMONY that the above is a copy of the original remaining on file in
 the Department of Internal Affairs of Pennsylvania, made
 conformably to an Act of Assembly approved the 16th day of
 February, 1833, I have hereunto set my Hand and caused
 the Seal of said Department to be affixed at Harrisburg,
 this seventeenth day of May 1905.

James B. [Signature]
 Secretary of Internal Affairs.